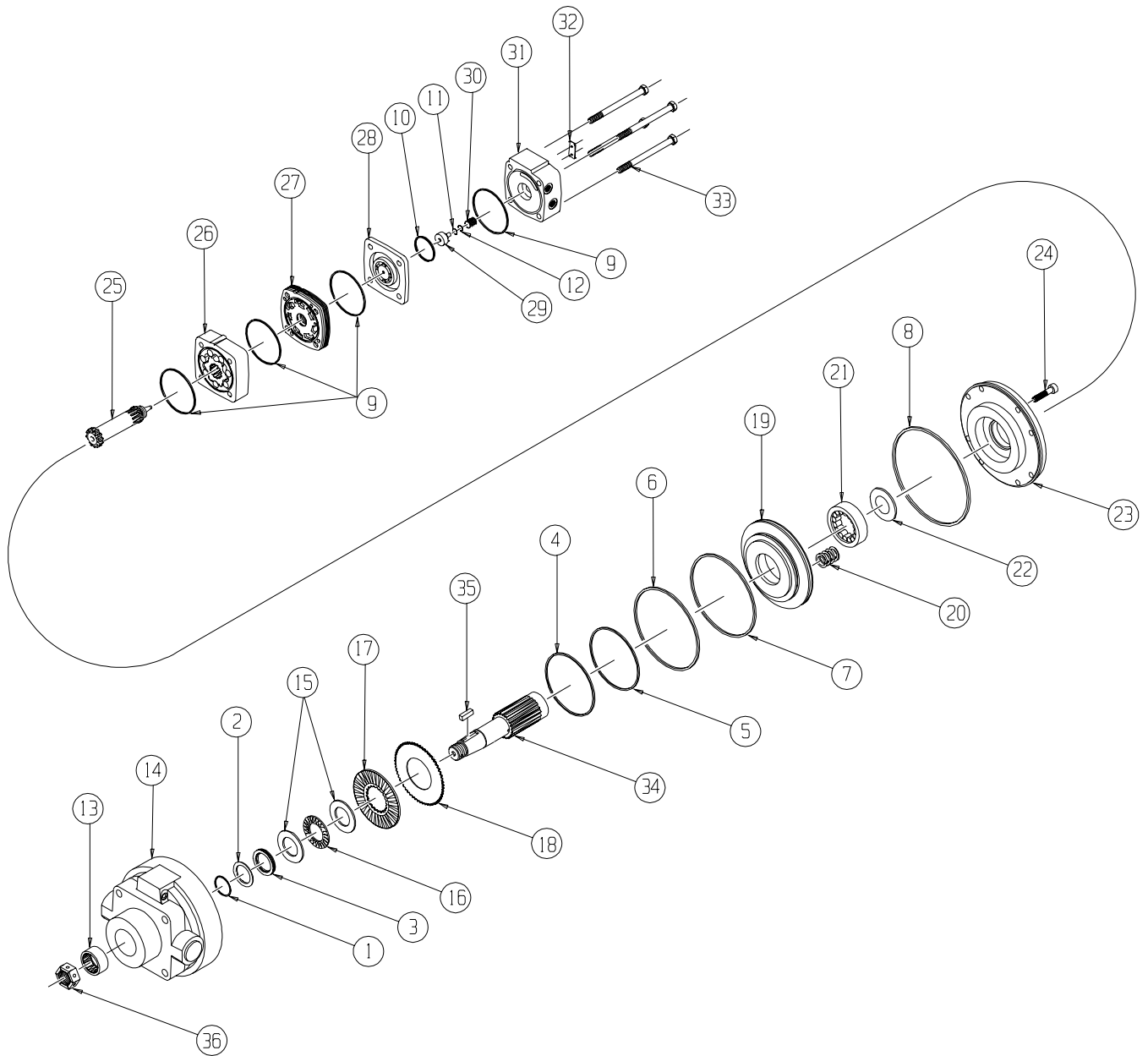


HB (310) Series



WARNING AND DISCLAIMER OF WARRANTIES, LIABILITY AND REMEDIES: Due to the special tools, fixtures and test equipment required to properly service the brake portion of this product, it is highly recommended that all motor/brakes be returned to the factory for repair. White Hydraulics accepts no responsibility for repairs performed by anyone other than White Hydraulics factory service personnel. TO THE EXTENT THAT ANY MOTOR/BRAKE IS REPAIRED BY ANYONE OTHER THAN WHITE HYDRAULICS, WHITE HYDRAULICS DISCLAIMS ANY WARRANTIES ON THE PRODUCTS. WHITE HYDRAULICS DISCLAIMS ANY AND ALL LIABILITY FOR DAMAGES BASED IN ANY WAY UPON PRODUCTS THAT HAVE BEEN REPAIRED BY ANYONE OTHER THAN WHITE HYDRAULICS. IN THE EVENT A PRODUCT REPAIRED BY ANYONE OTHER THAN WHITE HYDRAULICS FAILS, WHITE HYDRAULICS SHALL NOT BE LIABLE FOR ANY INCIDENTAL OR CONSEQUENTIAL DAMAGES RELATED IN ANY WAY TO ANY FAILURE OF THE PRODUCT OR THE REPAIRS. To inquire about repairs and obtain return authorization for a product, please contact the technical support department at 800-323-7298.

HB (310) SERIES MOTOR BRAKE COMPONENTS

SEAL KIT 30033752

DESCRIPTION	EXP. VIEW ITEM #	KIT
METAL BACKUP SHIM	1	ITEMS # 1-12
TEFLON BACKUP SEAL	2	INCLUDED IN
SHAFT SEAL	3	SEAL KIT
SMALL O-RING PISTON SEAL	4	30033752
SMALL TEFLON PISTON SEAL	5	
LARGE O-RING PISTON SEAL	6	
LARGE TEFLON PISTON SEAL	7	
O-RING SEAL	8	
BODY SEALS (4)	9	
COMMUTATOR SEAL	10	
PISTON O-RING SEAL	11	
PISTON TEFLON SEAL	12	

MISCELLANEOUS KITS

DESCRIPTION	EXP. VIEW ITEM #	KIT
FRONT SHAFT BEARING	13	500018203
THRUST WASHER	15	300018002
THRUST BEARING	16	300018003
FRICTIONS DISKS AND STAMPINGS	17 & 18	300018088
PISTON	19	710018038
SPRINGS (25)	20	910018014
REAR SHAFT BEARING	21	910018011
SPACER SHIM(S)	22	300018068
CAPSCREWS (8)	24	200018074
MANIFOLD	27	300015008
COMMUTATOR ASSEMBLY	28	300012013
ENDCOVER PISTON	29	300018056
PISTON SPRING	30	300018059
1000 PSI RELIEF VALVE	NOT SHOWN	500018228
2000 PSI RELIEF VALVE	NOT SHOWN	500018231
3000 PSI RELIEF VALVE	NOT SHOWN	500018221
1.00-20 UNEF SLOTTED NUT	36	500449304
1.00-20 UNEF SOLID NUT	36	500449303
1.00-20 UNEF LOCK NUT	36	300339303P
1.125-18 UNEF SLOTTED NUT	36	700018038
1.125-18 UNEF SOLID NUT	36	700018054

ROTORS, DRIVE LINKS AND BOLTS

WHEN CHANGING MOTOR DISPLACEMENTS, A MATCHING ROTOR, DRIVE LINK AND BOLT SET KIT MUST BE ORDERED.

EXPLODED VIEW ITEM #	26	26	25	33	33
DISPLACEMENT	STANDARD ROTOR KIT	FREETURN ROTOR KIT	DRIVE LINK KIT	BOLT SET KIT	BOLT SET KIT FOR ENDCOVERS WITH OFFSET PORTS
050	300332003	300332003F	300014028	300334003	300334003L
080	300332004	300332004F	300014028	300334004	300334004L
090	300332005	300332005F	300014028	300334005	300334005L
110	300332006	300332006F	300014029	300334006	300334006L
125	300332008	300332008F	300014029	300334008	300334008L
160	300332010	300332010F	300014030	300334010	300334010L
200	300332012	300332012F	300014030	300334012	300334012L
250	300332014	300332014F	300014027	300334014	300334014L
300	300332018	300332018F	300014027	300334018	300334018L
320	300332020	300332020F	300014031	300334024	300334024L
400	300332024	300332024F	300014031	300334024	300334024L

HOUSING KITS

DESCRIPTION	EXPLODED VIEW ITEM #	HOUSING KIT
#W2 & W8- HOUSING WITH TOP RELEASE PORTS	14	300130046
REAR HOUSING	23	300013027

SHAFTS AND RELATED COMPONENTS KITS

SHAFT KITS COME WITH RELATED SHAFT COMPONENTS (i.e. keys, nuts, etc.)

TO ORDER INDIVIDUAL SHAFT COMPONENTS (i.e. keys, nuts, bolts, washers or wire rings) USE THE KIT NUMBER FOR EACH INDIVIDUAL PART

EXPLODED VIEW ITEM #	34	35	36	NOT SHOWN	NOT SHOWN	NOT SHOWN
DESCRIPTION	SHAFT KIT	KEY KIT	NUT KIT	WIRE RING KIT	WASHER KIT	BOLT KIT
#22- 1-1/4" TAPERED	300110063	300339101		---	---	---
#31- 1-1/2" TAPERED	300110064	500449102		---	---	---
#28- 35MM TAPERED	300110079	500449104	SEE MISC.	---	---	---
#21- 32MM STRAIGHT	300110067	300339103	KITS LIST	500449201	---	---
#20- 1-1/4" STRAIGHT	300110074	300339101	ABOVE	500449201	300339302	300339301
#23- 1-1/4" 14 TOOTH SPLINE	300110075	---		500449201	---	---

ENDCOVER KITS

(EXPLODED VIEW ITEM #31)

ENDCOVER KITS COME ASSEMBLED WITH EXPLODED VIEW ITEMS # 11, 12, 29, & 30.

TO ORDER A RELIEF VALVE FOR THE VALVE CAVITY ENDCOVERS, SEE THE MISCELLANEOUS KITS LISTING ABOVE FOR RELIEF VALVE KIT #S.

DESCRIPTION	STANDARD ENDCOVER KIT	VALVE CAVITY ENDCOVER KIT
#5- 9/16" O-RING SIDE PORTS	300160000	300160000R
#6- 1-1/16" O-RING SIDE PORTS	300160001	---
#7- 1/2" BSP.F SIDE PORTS	300160002	---
#2- 1/2" BSP.F REAR PORTS	300160003	---
#9- 3/8" BSP.F SIDE PORTS	300160004	---
#1- 7/8" O-RING OFFSET PORTS	300160006	---
#1- 7/8" O-RING REAR PORTS	300160007	300160007R
#2- 1/2" BSP.F OFFSET PORTS	300160008	---
#3- 1/2" BSP.F OFFSET MANIFOLD PORTS	300160009	---